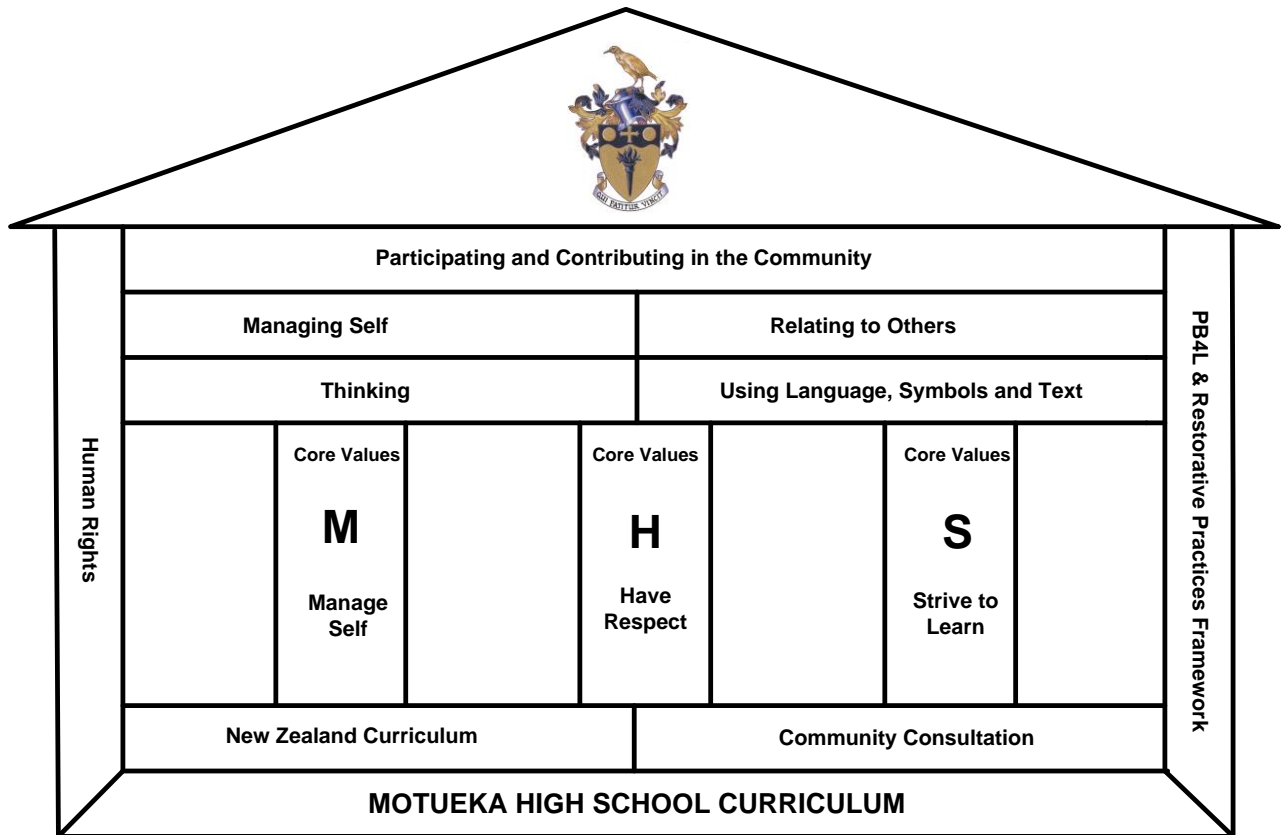


MOTUEKA HIGH SCHOOL

“The Motueka High School Way”



THE STORY BEHIND “THE MOTUEKA WAY”

Both the Curriculum and the Core Values for Motueka High School underpinned by the NZC Key Competencies (Managing Self, Relating to Others, Thinking and Using Language, Symbols and Text) the wider New Zealand Curriculum Document and Community Consultation.

The Human Rights Framework, The Positive Behaviour for Learning (PB4L) philosophy and the Restorative Practices Framework also support and guide our direction.

MOTTO, SLOGAN, MISSION, VALUES AND VISION

MOTTO

(Our guiding principle)

Qui Patitur Vincit – Success Through Effort

Kia Kaha, Kia Uu

SLOGAN

(Our student-generated expression of what MHS means to them)

Today's Learners; Tomorrow's Leaders

MISSION STATEMENT

(why does our school exist?)

To prepare students for their future by providing a balanced education that encourages the full development of each student within a caring environment and in partnership with the community

VISION STATEMENT

(where do we want to be in the future?)

We will be a school where:

- Students reach their full potential
- Students are proud to be attending
- Learning is community and student focused
- Learning and teaching of the highest calibre occurs
- A holistic (hau ora) approach to student development is evident
- The community holds our school in high regard

Students who attend our school will:

- Have a strong sense of who they are
- Have a pride in our school
- Leave being able to contribute to and function in their community
- Leave confident in their ability to learn, change, adapt, cope with set-backs and to grow
- Reach their full potential academically, culturally and physically

VALUES STATEMENT

(what values underpin our day-to-day function?)

Belonging to the community:

- We are a school that values its partnership with its community.
- We value the support we get from the community.
- We want to provide an excellent school for the students of our community.

Respect:

- Our school is one that demonstrates respect for self, respect for others and respect for the environment.

Individual worth:

- Every student who attends Motueka High School will experience success and have the opportunity to develop their full potential.
- Every student is valued as a unique individual.
- Every member of staff is valued as an individual and for their contribution to learning.

Learning is valued:

- As a school community we value life-long learning.
- We believe in the importance of students knowing how to learn.
- We believe in developing an enthusiasm for learning among our students.

Interwoven with these values are the Maori values of:

- | | |
|-------------------------|--|
| • <i>Aroha</i> | Empathy for others |
| • <i>Manakitanga</i> | Caring for others |
| • <i>Matauranga</i> | Seeking knowledge/gaining an education |
| • <i>Whanaungatanga</i> | Family and community sharing |
| • <i>Mana</i> | Respect for and from others |
| • <i>Wairua</i> | Spirituality |
| • <i>Mauri</i> | Life force |

DESCRIPTION OF THE SCHOOL COMMUNITY

Motueka High School draws its student population from fourteen contributing schools stretching from Marahau to Dovedale and Mapua. The schools cater for the student population of Motueka township and the densely populated rural surrounds.

Motueka township is situated 35Km from Richmond and 45Km from the city of Nelson. Motueka is in close proximity to three National Parks – Kahurangi, Abel Tasman and Nelson Lakes – as well as being near the coastal resort of Kaiteriteri.

The Motueka Region has its economic base in horticulture, agriculture, forestry, fishing and tourism which makes the town a regionally important servicing and shopping centre.

The community is made up of diverse groups including cooperative communities, artists, retired people, religious groups, people with strong ethnic backgrounds, itinerant workers and strong established rural communities.

GENERAL DESCRIPTION OF THE SCHOOL

Motueka High School is a State co-educational Year 9 to Year 13 secondary school with approximately 620 pupils, 50% of whom travel by bus.

Our size is seen as a strength and we pride ourselves in the knowledge that we know all of the students in our school, care about them as individuals and work hard to help them to achieve their goals. The school culture is proud, positive, supportive, safe, caring, adaptable, resilient and open to scrutiny.

The focus of our school is on effective teaching and learning. School programmes are relevant, innovative and appropriate to student needs.

Motueka High School acknowledges special groups such as:

- Community and Government support services such as, Group Special Education, Youth Aid, CAMHS, Tertiary Education Commission.
- 19% Maori pupil population.
- Strong religious groups.
- Single parent families.
- Families dependent on seasonal work or on benefits.
- Our 'sister' town relationship with Kiyosato.

Some of the features of the school include:

- A broad curriculum covering all of the essential learning areas is offered.
- Programmes of work that meet the needs of students at both ends of the learning continuum.
- A strong and reliable staff of competent and experienced teachers, most of whom are full time and live in the community.
- A recognised strength in the performing arts.
- Instrumental tuition is provided by itinerant teachers.
- A 'Whanau Class' to provide a Maori perspective that addresses the needs of our students and the desires of our parents.
- A strong network of library, office, support, caretaking and grounds staff gives full support to the school community.
- The school is a significant local employer and consumer of local goods and services.
- An International Student programme is currently attracting students from a variety of countries to study at the school.
- A wide range of sporting, leisure and cultural activities is encouraged both within the school and through inter-school fixtures.
- School activities provide a significant focus for student relationships and social interactions which is reflected in a strong sense of community extending outside the school.
- The spacious, landscaped and well tended grounds including the playing fields, court areas, gymnasium and swimming pool are used by the community.
- School buildings are well equipped and maintained and are made available for the community for such activities as educational programmes, large community meetings and entertainment groups.
- Many students leave the district for further education and employment.
- The provision of Alternative Education options for 'alienated' students.
- A Student Exchange programme with Kiyosato Senior School.

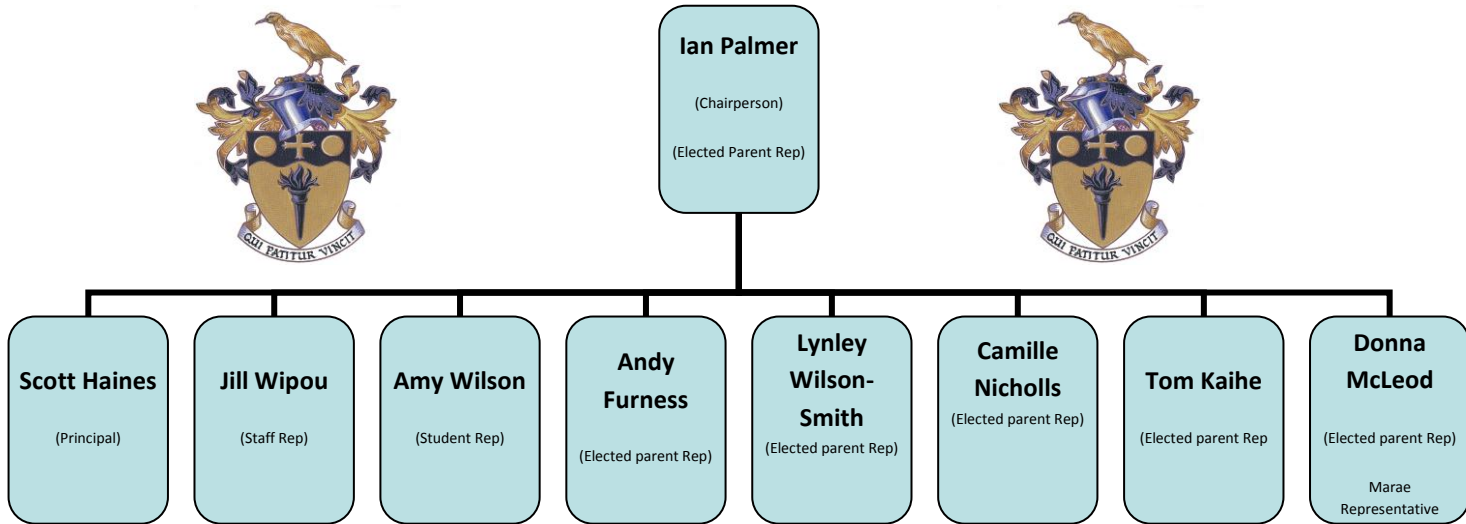
Within the school's regional setting there are elements that influence and provide opportunities for our students such as:

- Te Awhina Marae as the base for local iwi groups.
- The Recreation Centre as a multi-purpose sporting and cultural facility.

- The National and Forest Parks for outdoor activities.
- Whenua-iti for its facilities and youth programmes.
- Abel Tasman Education Trust (ATET) as a provider of tertiary and supplementary courses.
- The local business and farming activities that offer students work experience and field trips.

MOTUEKA HIGH SCHOOL MANAGEMENT STRUCTURE





BOARD OF TRUSTEES



Sub-committees:

- ⇒ Finance (convened once a month)
- ⇒ Property (convened once a term)
- ⇒ Discipline (convened as necessary)

SENIOR MANAGEMENT TEAM

	Scott Haines Principal		Marieann Keenan Deputy Principal
	Paul Blackbeard Deputy Principal		Mary Wilson Executive Officer

